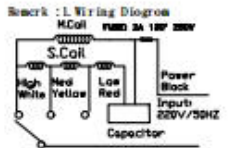
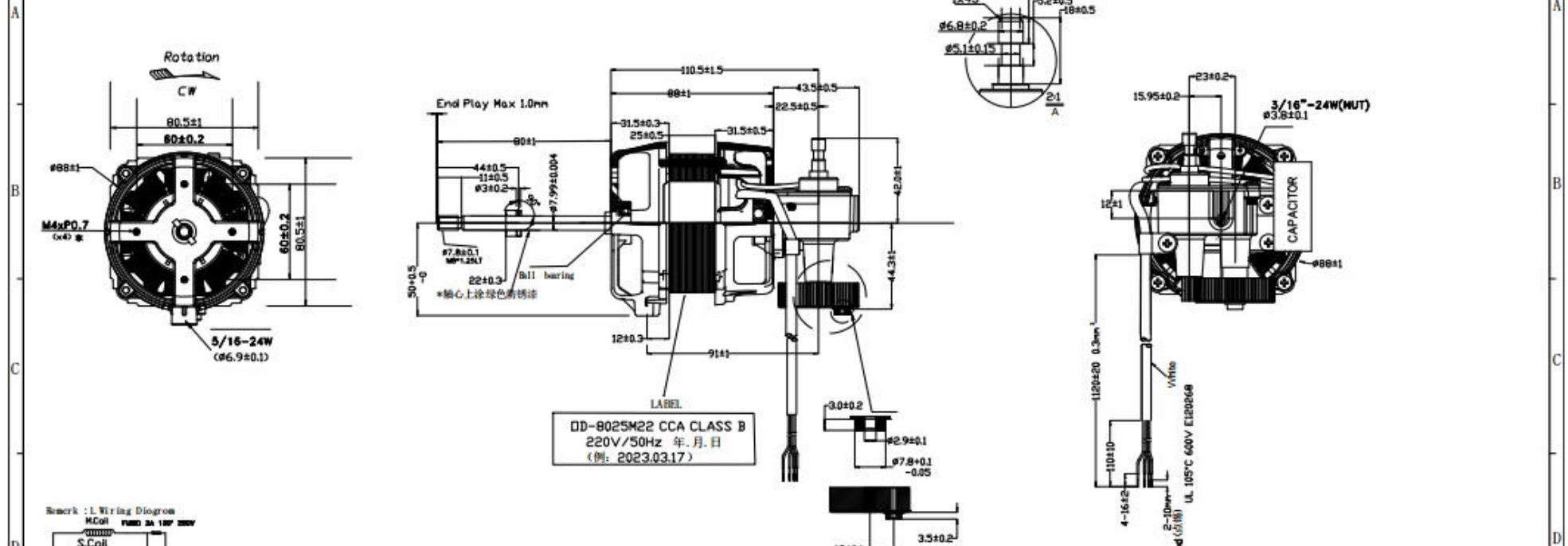


Rohs Compliance

REV	DESCRIPTION	DATE	BY



2. PERFORMANCE (ON LOAD) (18°40'NBY BLADE):

Rated Voltage: 220V/50Hz			
consumption:	Current A	Power W	Speed rpm
High	0.278 ±10%	60 ±5%	1150 ±10%
Med	0.261 ±10%	56.5 ±5%	1050 ±10%
Low	0.245 ±10%	52.5 ±5%	950 ±10%

- NOTES:
1. TYPE: PERMANENT CAPACITOR MOTOR; MOTOR WITH PERMANENT (4POLES)
 2. SOURCE: SINGLE PHASE 220V/50Hz;
 3. CAPACITORS: 2.0uF/400VAC;
 4. COIL: BLACK HIGH-WHITE MED-YELLOW LOW-RED
 5. STATOR: 80.5*25mm, ROTOR: 25mm (Reference);
 6. THERMAL CUTOFF FUSE: NPO 250V 2A 130° C;
 7. ENAMELED WIRE: CCA;
 8. MATERIAL OF GEAR BOX IS ALUMINIUM
 9. LEADER WIRE: UL 1015 22AWG 105°C ±120mm
 10. CLASS OF INSULATION: CLASS B;
 11. START VOLTAGE (W to Fw) (有刷时电压启动): ≤170V;
 12. Strength of gear box (牙箱轴杆扭力): >10KG;
 13. Temp Rise ≤75K; 14. Ball bearing (802Z)



备注: 启动时会有轻微的电磁音
Remarks: It has a slight electromagnetic sound when it is starting

GENERAL TOLERANCES ISO 2768-m											
Permissible deviations for linear dimensions											
Permissible deviations for basic size range											
>0.5	>3	>6	>30	>120	>400	>1000	>2000	>4000	>200	>1000	>4000
±0.3	±0.6	±0.30	±0.120	±0.400	±1.000	±2.000	±4.000	±10.000	±0.2	±0.5	±1.2
n	±0.1	±0.1	±0.2	±0.3	±0.5	±0.8	±1.2	±2	Permissible deviations for angular dimensions		
Permissible deviations for ranges of lengths in millimeters of the shorter side of the angle concerned						Permissible deviations for broken edges (external radii chamfer heights)					
±10	>10	>50	>120	>400	>0.5	>3	>6	>10	Permissible deviations for basic size range		
±0.5	±1.0	±1.5	±2.0	±3.0	±0.3	±0.6	±1.0	±1.5	±0.2	±0.5	±1
n	±1*	±0.3*	±0.25*	±0.3*	±0.5*	±0.2	±0.5	±1			

DWN. BY:	CHK. BY:	APP. BY :
Date (yyyyymmdd): 2023.03.17	Date (yyyyymmdd)	Date (yyyyymmdd) 2023.03.17
MATERIAL:		
FINISH:		
General Tolerance ISO 2768-1 Class m (Unless specified)		
ALL DIMENSIONS ARE IN MILLIMETRES		
TITLE		SCALE 3:1
OD-8025M22		NOT SCALE
DWG NO. 8025M22		SHEET 1 OF 1
SHENZHEN ODIN IMPORT AND EXPORT CO.,LTD		

SHENZHEN ODIN IMPORT AND EXPORT CO.,LTD

FAN MOTOR TEST REPORT

廠商 Manufacturer		產品型號 Product model		18寸		日期 Date		2023.03.17			
額定電壓 Rated Voltage		220V 50 Hz		客戶 Customer		WAC		測試電壓 Test Voltage		220 V 50 Hz	
NO.		1	2								
I Result		1min	1min						其他要求 Other requirements		
電流 A	HI	0.278	0.278					馬達型號Motor model	8025M22 CCA		
	MED	0.26	0.262					定子厚度Stack thickness (mm)	8025		
	LOW	0.244	0.245					保險絲TCO	130 °C 250 V 2 A A4-F		
功率 W	HI	61	61					電容Capacitor	2.0uF/400V		
	MED	56.5	56.8					扇葉Blade	18inch AS 3葉 407g		
	LOW	52.5	52.7					扇網Grill	奧丁16寸網殼光無網		
轉速 RPM	HI	1116	1110					判定標準Judgment standard	CLASS B		
	MED	1047	1040					結果判定Judgment			
	LOW	931	942								
電阻 Ω	HI										
溫度試驗 Temperature rise test	電阻 R ₂₀ Ω	HI							备注：因样品加急，样品现使用CBB61 S0/P0普通电容 不影响性能，后续会使用CBB61 S3/P2 环保电容器 $\Delta T = R2/R1 * (234.5 + T1) - (234.5 + T2)$		
	溫升 ΔT K	HI									
起動電壓Start voltage(V)		84	81					經(副)理 Manager			
Hi-pot		ok	ok					課長 Service			
T ₁₀ (%)								測試者 Tester	毋賢飞		
T ₂₀ (%)											



SHENZHEN ODIN IMPORT AND EXPORT CO.,LTD



FAN MOTOR TEST REPORT

廠商 Manufacturer				產品型號 Product model		18寸		日期 Date		2023.03.17	
額定電壓 Rated Voltage		220V/50 Hz		客戶 Customer		WAC		測試電壓 Test Voltage		220 V/50 Hz	
NO.		1	2								
Result	5min		5min							其他要求 Other requirements	
	電流 A	HI	0.278	0.279						馬達型號Motor model	8025M22 CCA
		MED	0.261	0.262						定子厚度Stack thickness (mm)	8025
		LOW	0.245	0.245						保險絲TCO	130 ℃250 V 2 A A4-F
功率 W		HI	60.9	61						電容Capacitor	2.0uf/400V
		MED	56.6	56.8						扇葉Blade	18inch AS 3葉 407g
		LOW	52.5	52.5						扇網Grill	奧丁16寸雙殼光面網
轉速 RPM		HI	1118	1108						判定標準Judgment standard	CLASS B
		MED	1045	1031						結果判定Judgment	
		LOW	939	963							
電阻 Ω		HI									
										备注：因样品加急，样品现使用CBB61 SQ/P0普通电容 不影响性能，后续会使用CBB61 S3/P2 环保电容器	
Temperature rise test	電阻 R ₂ Ω	HI									
	溫升 ΔT K	HI									
起動電壓Start voltage(V)		84	81							經(副)理 Manager	
Hi-pot		ok	ok							課長 Service	
T ₁ (℃)										測試者 Tester	毋賢飞
T ₂ (℃)											



SHENZHEN ODIN IMPORT AND EXPORT CO.,LTD

FAN MOTOR TEST REPORT

廠商 Manufacturer					產品型號 Product model	18寸			日期 Date	2023.03.17	
額定電壓 Rated Voltage		220V/50 Hz			客戶 Customer	MAC			溫升測試電壓 ΔT Test Voltage	220 V/50 Hz	
NO.		2									
Result		1min	5min	2H	其他要求 Other requirements						
		電流 A		HI	0.278	0.279	0.278	馬達型號Motor model		8025M22 CCA	
		MED		0.262	0.262	0.262	定子厚度Stack thickness (mm)		8025		
		LOW		0.245	0.245	0.246	保險絲TCD		130 °C 250 V 2 A A4-F		
功率 W		HI		61	61	60.7	電容Capacitor		2.0uf/400V		
		MED		56.8	56.8	56.4	扇葉Blade		18inch AS 3葉 407g		
		LOW		52.7	52.5	52.3	扇網Grill		奧丁16寸懸掛光無網		
轉速 RPM		HI		1110	1108	1083	判定標準Judgment standard 結果判定Judgment		CLASS B		
		MED		1040	1031	1030					
		LOW		942	963	960					
電阻 Ω		HI				360.4					
											
溫升試驗 Temperature rise test		電阻 R ₂ Ω		HI		440.6	各注：因样品加急，样品现使用CB61 S0/P0普通电容 不影响性能，后续会使用CB61 S3/P2 环保电容器 $\Delta T = R2/R1 * (234.5+T1) - (234.5+T2)$				
		溫升 ΔT K		HI		58.8					
起動電壓Start voltage(V)		81									
Hi-pot		ok									
T _{10v1}				27.5		經(副)理 Manager 課長 Service 測試者 Tester					
T _{20v1}				27							
				母賢飞							